

Autodesk Inventor Essentials Training

Course Outline

Course Description

The course is an introduction to 3D Design for Autodesk Inventor. It is a 3-day essentials course, split into 2 initial days of training with a third date 6-8 weeks later. This allows candidates sufficient time with the software, before returning for their final day of training. The objective is to teach candidates to become proficient in the creation of parts and assemblies of moderate complexity and how to document and showcase their designs.

Duration –

3 Days

Who should attend?

Novices or users with little experience and/or those who have used different 3D CAD package.

Learning Objectives?

To receive a thorough grounding in Autodesk Inventor enabling candidates to produce and document 3D digital Prototypes so they can excel in their fields.

Getting Started

- 3D Models vs. Digital Prototypes
- Starting and closing Inventor
- Inventor file types
- User interface
- Designing Parametric parts
- Creating part and drawing templates

Data and Projects

- Working with projects
- Single user vs. Multi user
- Creating Projects
- Content Center
- Setting up projects

Introduction to Sketching

- Options and settings for sketches
- Creating sketches from AutoCAD geometry
- Creating 2D Sketches
- Geometric constraints
- Dimensioning sketches
- Construction geometry



Basic Part Design

- Creating sketch based and place features.
- Patterning and mirroring
- Editing parametric parts
- Advanced modelling techniques
- Using equations and parameters
- Multi - body parts
- iProperties

Sheet Metal

- Using templates and rules
- Basic Sheet Metal Features
- Working with Flat Patterns
- Annotating Sheet Metal Designs

Introduction to Assembly Modelling

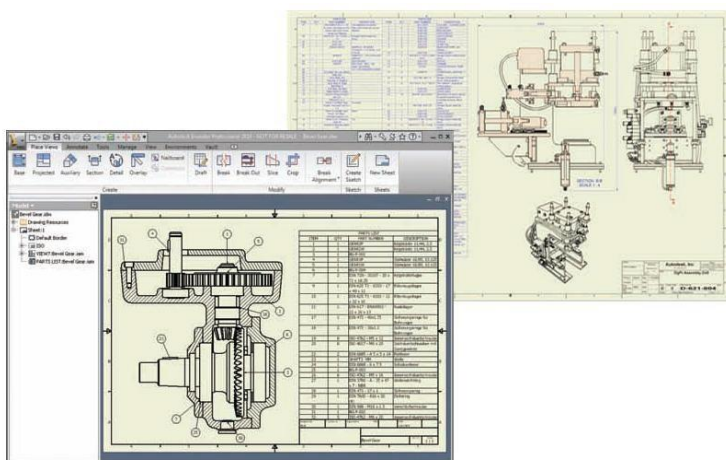
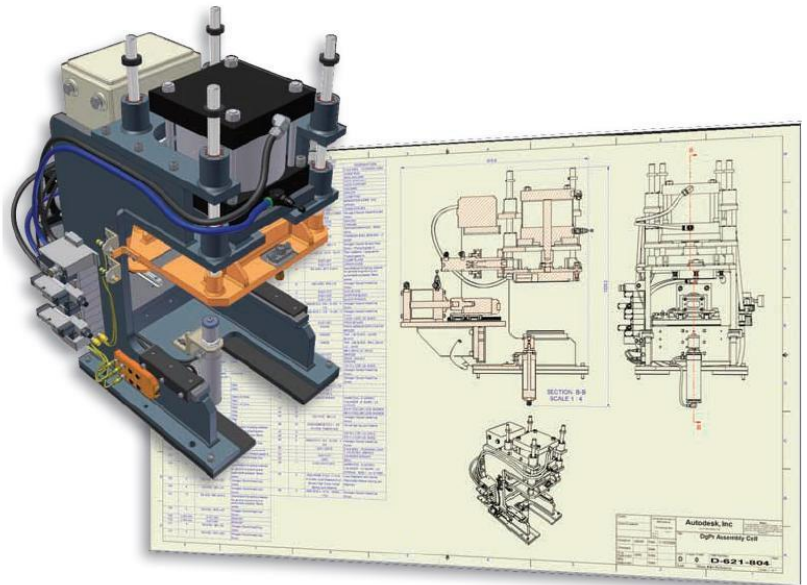
- Placing components in an assembly
- Inserting Content Centre parts
- Constraints and Joints
- Editing parts within an assembly
- Assembly Management Tools

Introduction to Presentations

- Creating a presentation view
- Animating presentations and exploding views

Basic View Creation

- Introduction to the drawing environment
- Base and projected views
- Section and detail views
- Automated and manual dimensioning
- Creating a bill of materials and customised parts list



Course Requirements

- Microsoft® Windows®7, Vista® or XP working knowledge.
- Drafting and design experience is a plus.
- Some working knowledge of AutoCAD is desirable but not essential

Additional Info

Candidates receive comprehensive courseware upon completion. Afterwards they have the option of completing the Autodesk Inventor Certification exam and gaining the industry recognised 'Autodesk Certified' status.